

SAMSUNG PROPRIETARY

THIS DOCUMENT CONTAINS CONFIDENTIAL
PROPRIETARY INFORMATION THAT IS
SAMSUNG ELECTRONICS CO.'S PROPERTY.
DO NOT DISCLOSE TO OR DUPLICATE FOR OTHERS
EXCEPT AS AUTHORIZED BY SAMSUNG.

ISTANBUL

CPU : Intel PENRYN

Chip Set : Intel CANTIGA PM + ICH9M

Remarks : Montevina Platform (NB9M)

Model Name : ISTANBUL

PBA Name : MAIN

PCB Code : TPT : BA41-00919A

GCE : BA41-00920A

NAN : BA41-00921A

Dev : Step : PV

Revision : 00

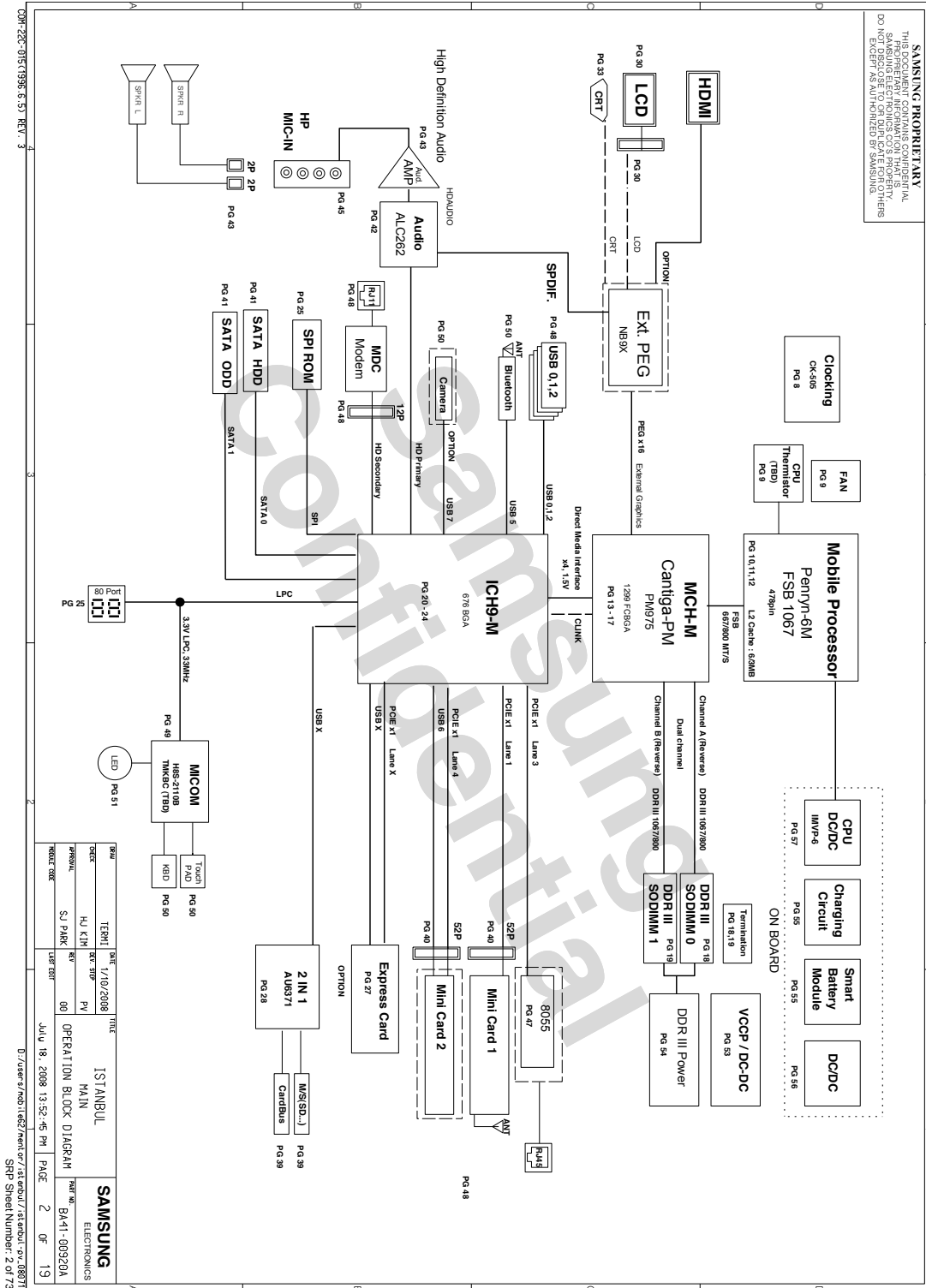
T.R. Date : 2008.07.18

Owner: SEC Mobile R & D **Signature: X**

NAME	TERE	DATE	1/10/2008	TITLE	ISTANBUL
DOCS	HJ CH	REV. #	PV		
APPROVAL	REV		00	COVER	
WORK DOCS	SJ PARK	LAST EDIT			
JUL 18, 2008 13:52:45 PM				PAGE	1 OF 19
				PART NO.	BA-1-00520A
				SAMSUNG ELECTRONICS	

- 이 문서는 삼성전자의 기술 자산으로 승인자만이 사용할 수 있습니다 -
- This Document can not be used without Samsung's authorization -

8. Block Diagram and Schematic



SAMSUNG PROPRIETARY
THIS DOCUMENT CONTAINS CONFIDENTIAL
PROPRIETARY INFORMATION THAT IS
SAMSUNG ELECTRONICS CO.'S PROPERTY.
DO NOT DISCLOSE TO OR DUPLICATE FOR OTHERS
EXCEPT AS AUTHORIZED BY SAMSUNG.

BOARD INFORMATION

Crystal / Oscillator			
TYPE	FREQUENCY	DEVICE	USAGE
Oscillator	32.768kHz	CH1M	Real Time Clock
Oscillator	14.733MHz	CH1M	System Clock
Oscillator	14.31818kHz	CLKC/Gemradio	CK-505
Oscillator	22MHz	LAN	Intel LAN

Devices	Resolution	PANNE_DETECT_0
LCD Pannel Detect (TBD)		

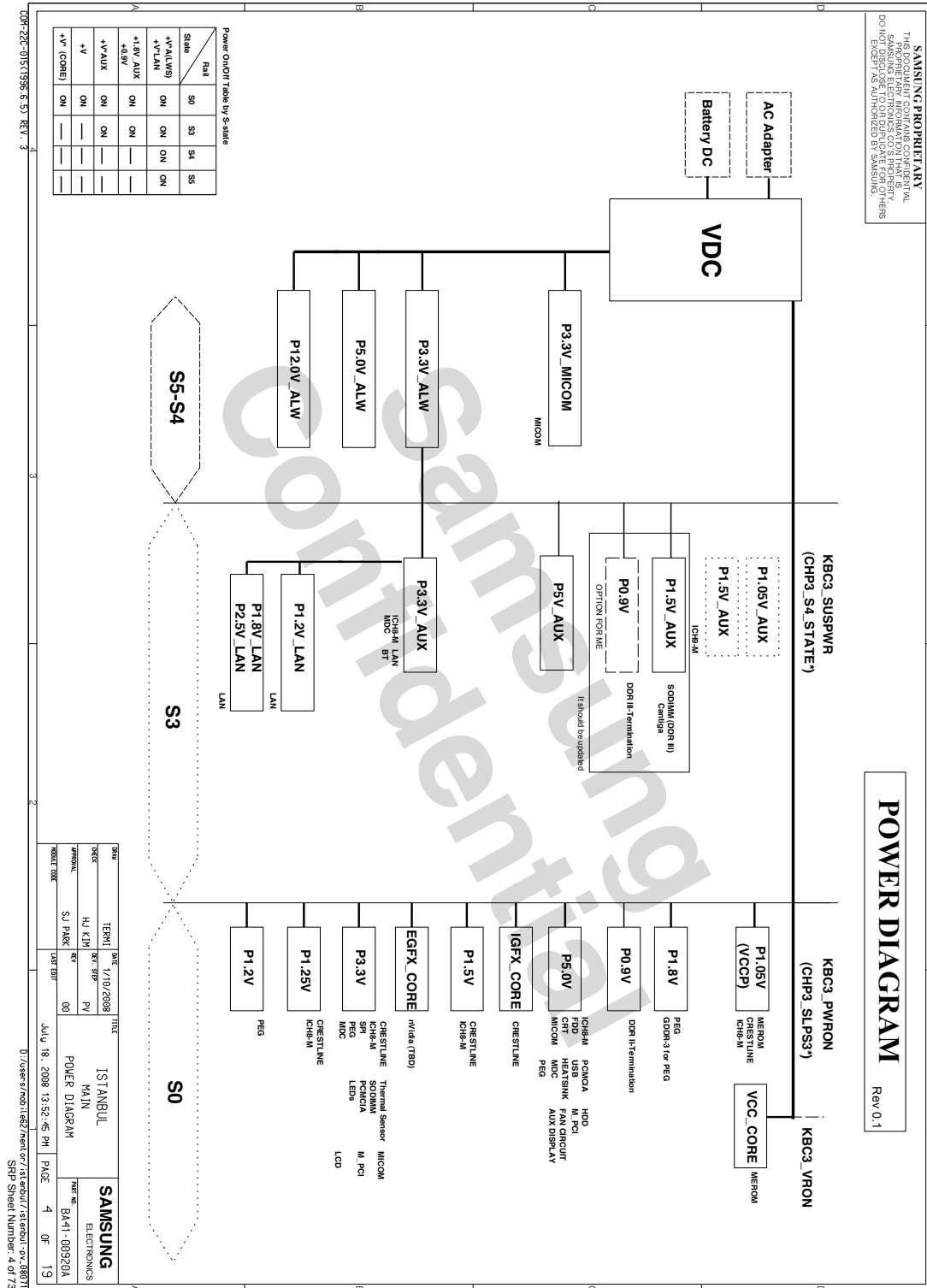
Module	Master	Slave
CPU Thermal Sensor	0711 101x	7Ah
SODIMM	1010 000x	A0h
SODIMM	0010 000x	50h
Thermal Sensor on SODIMM1	0010 010x	51h
Thermal Sensor on SODIMM1	0011 010x	34h
CPU-505A (Clock Generator)	1101 001x	D2h

See rev notes for more information.

SECTION		DATE		TITLE		SAMSUNG	
TERMI		1/10/2008		ISTANBUL		ELECTRONICS	
DECK		K.C. STP		CHIPSET POWER			
JANISAL		PV		UNDEFINED		PART NO. BA-41 - 00920A	
S.J. PARK		KTY					
PROJECT CODE		00					
JULY 18, 2008 13:52:45 PM		PAGE		3		OF 19	

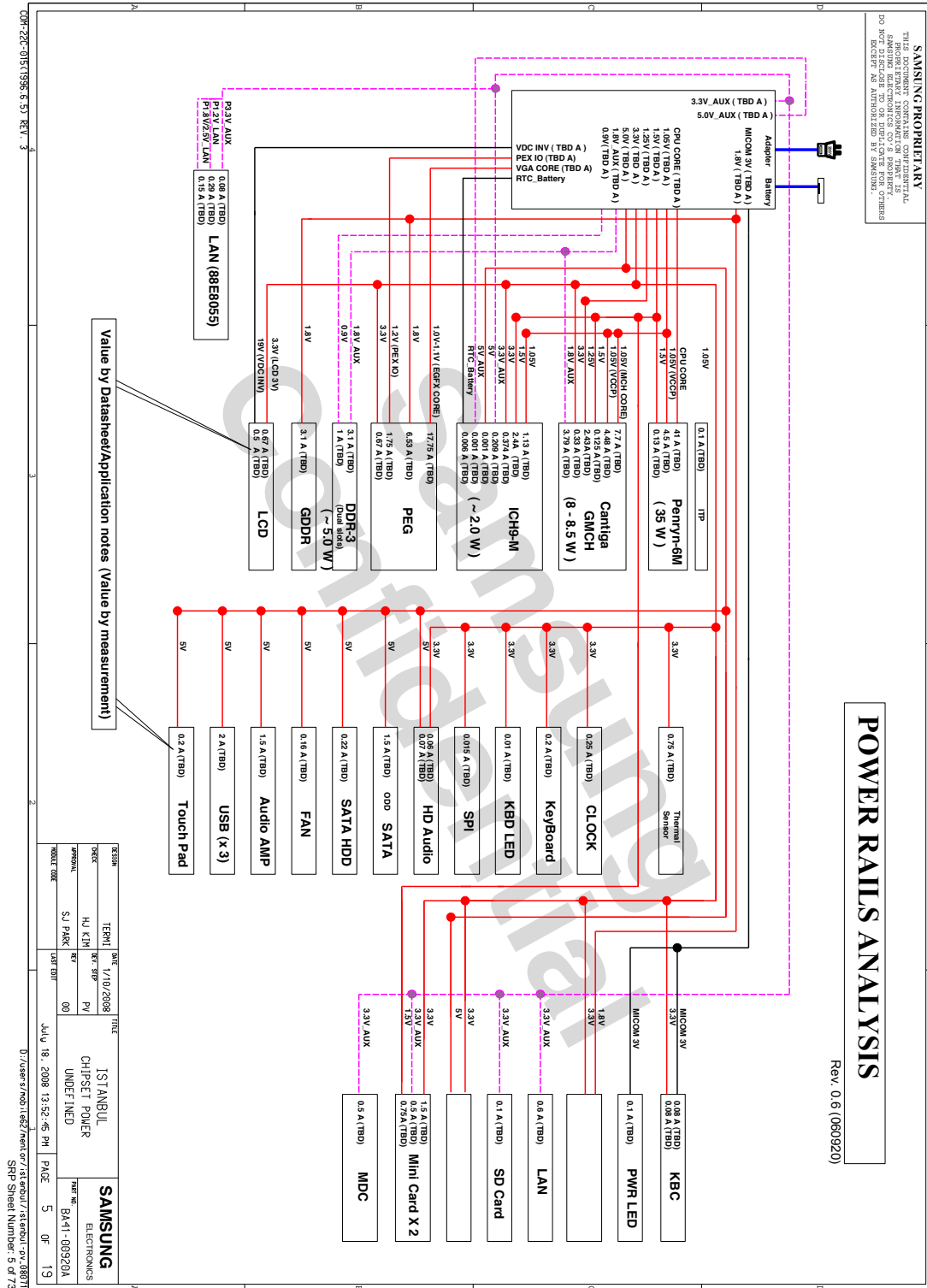
- 이 문서는 삼성전자의 기술 자산으로 승인자만이 사용할 수 있습니다 -
- This Document can not be used without Samsung's authorization -

8. Block Diagram and Schematic



- 이 문서는 삼성전자의 기술 자산으로 승인자만이 사용할 수 있습니다 -
- This Document can not be used without Samsung's authorization -

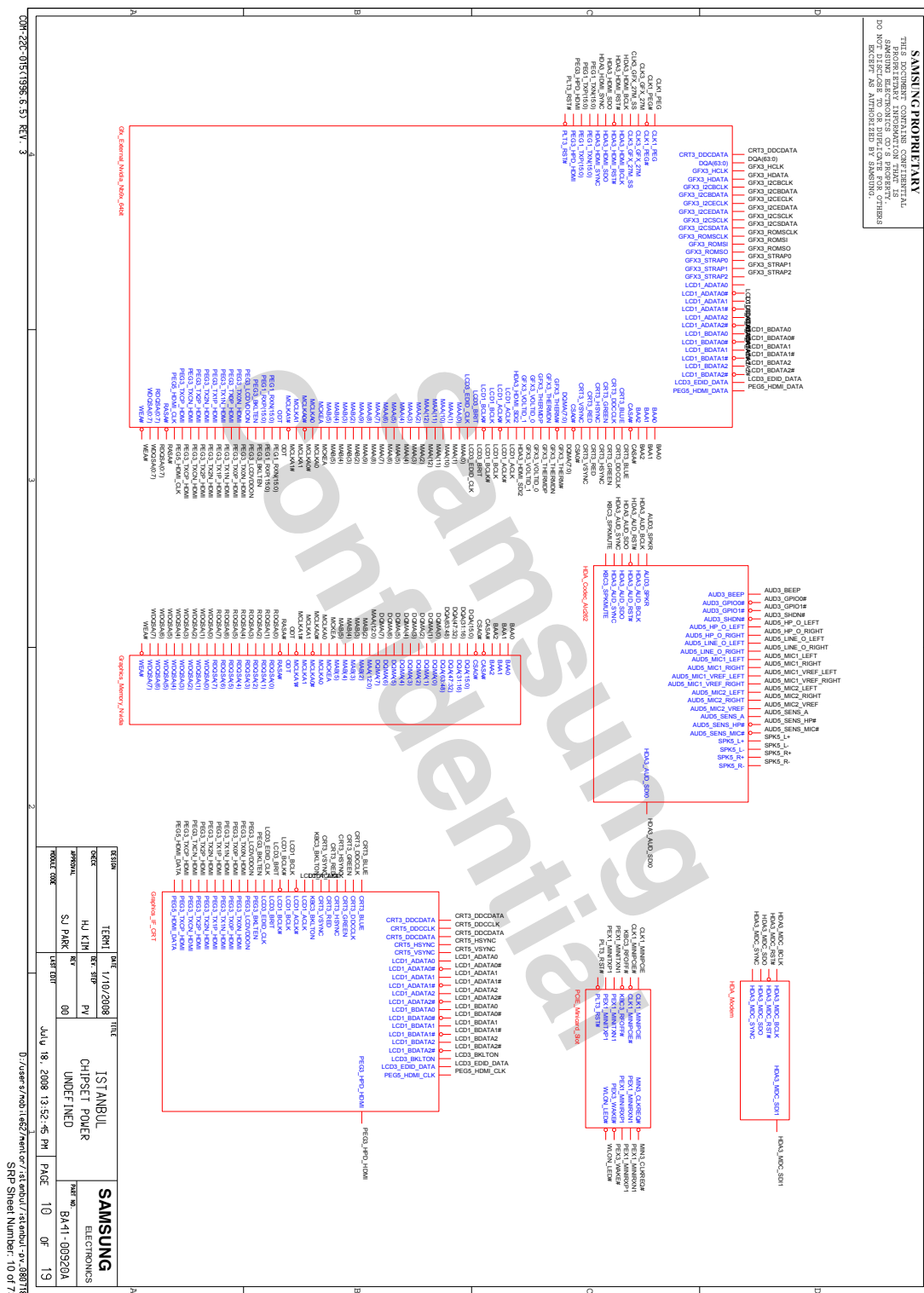
8. Block Diagram and Schematic



8-7

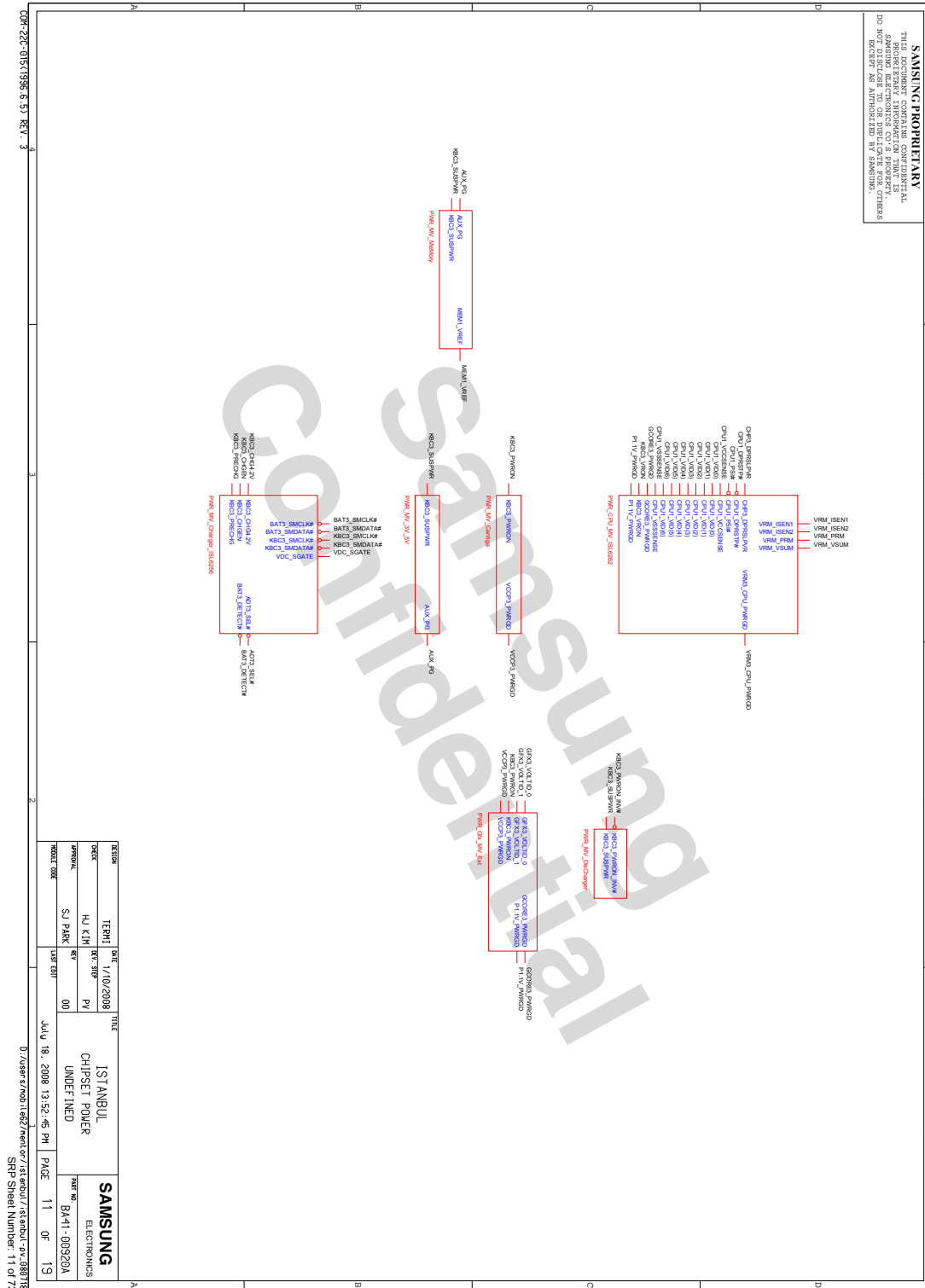
- 이 문서는 삼성전자의 기술 자산으로 승인자만이 사용할 수 있습니다 -
- This Document can not be used without Samsung's authorization -

8. Block Diagram and Schematic

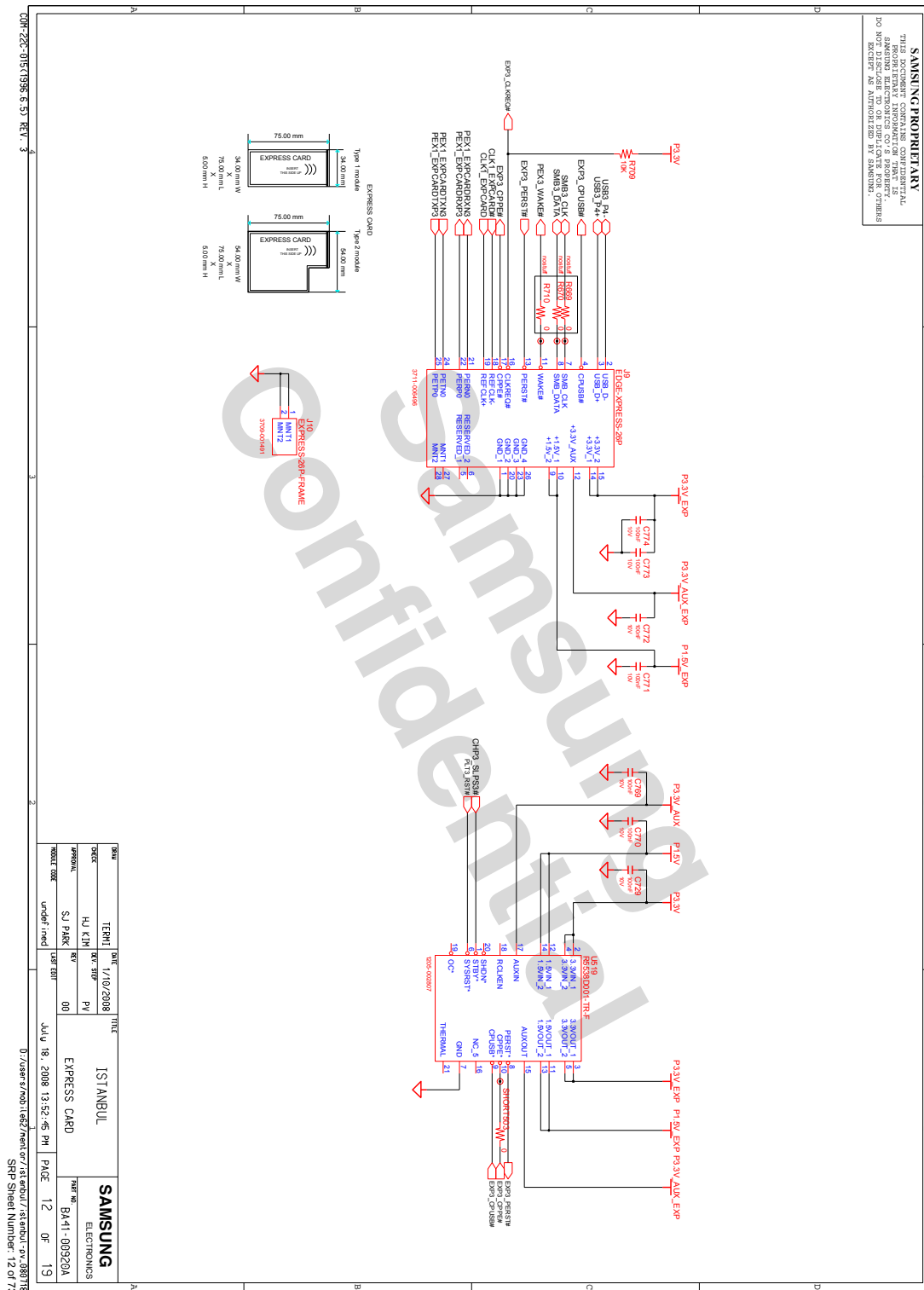


- 이 문서는 삼성전자의 기술 자산으로 승인자만이 사용할 수 있습니다 -
- This Document can not be used without Samsung's authorization -

8. Block Diagram and Schematic

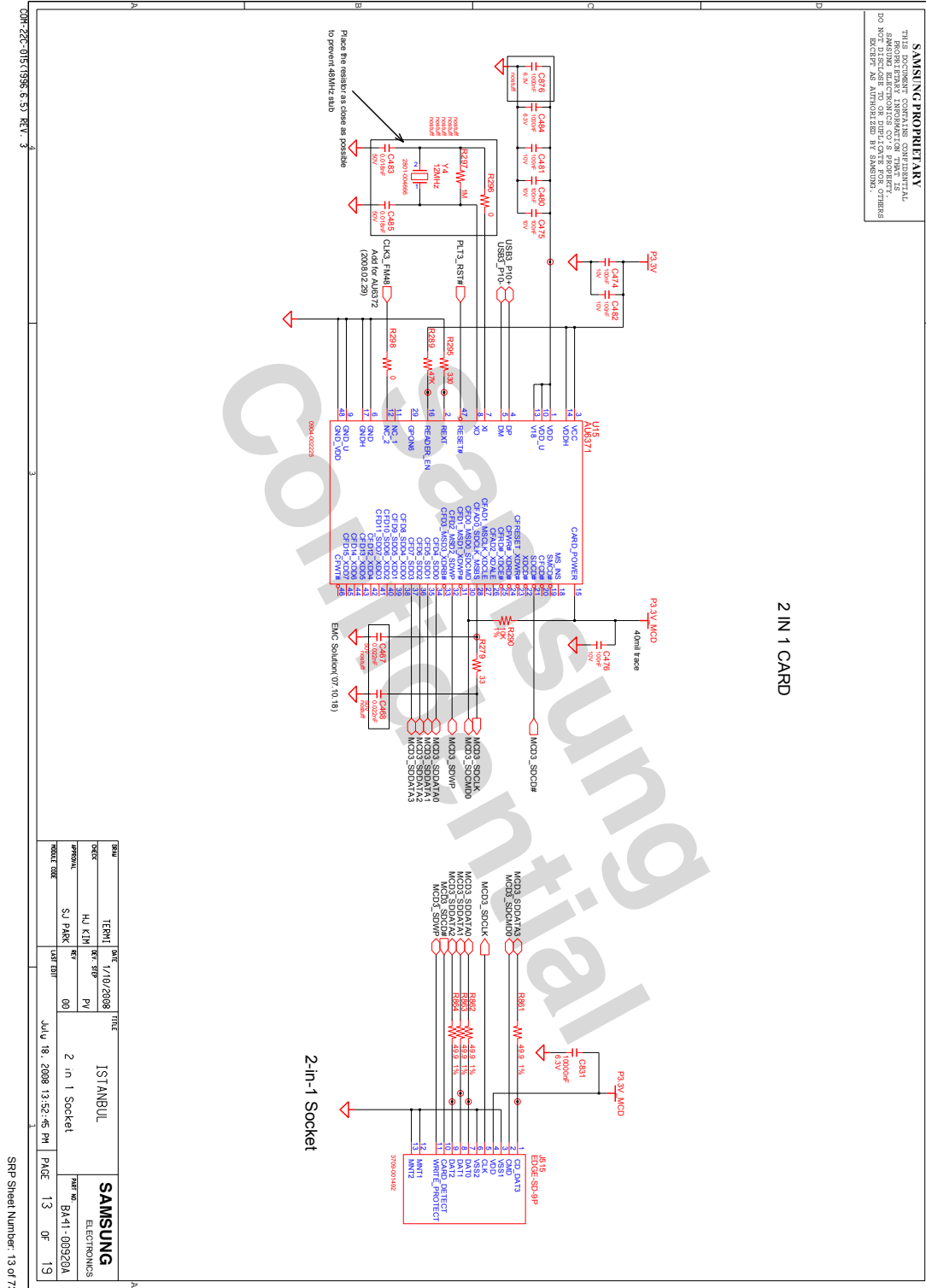


SAMSUNG PROPRIETARY
THIS DOCUMENT CONTAINS CONFIDENTIAL
PROPERTY INFORMATION THAT IS
SAMSUNG ELECTRONICS CO.'S PROPERTY.
DO NOT DISCLOSE TO OR DUPLICATE FOR OTHERS
EXCEPT AS AUTHORIZED BY SAMSUNG.



- 이 문서는 삼성전자의 기술 자산으로 승인자만이 사용할 수 있습니다 -
- This Document can not be used without Samsung's authorization -

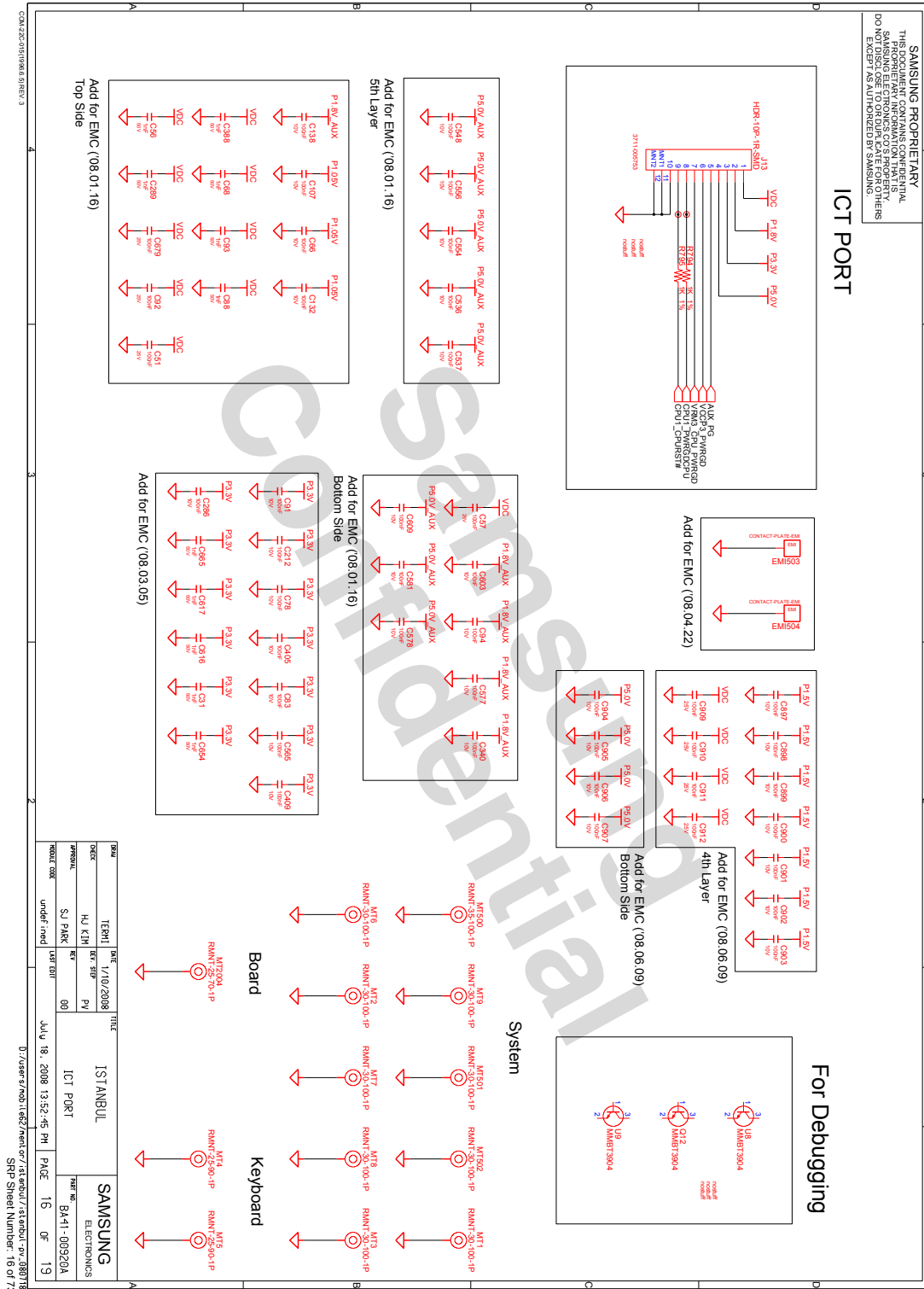
8. Block Diagram and Schematic



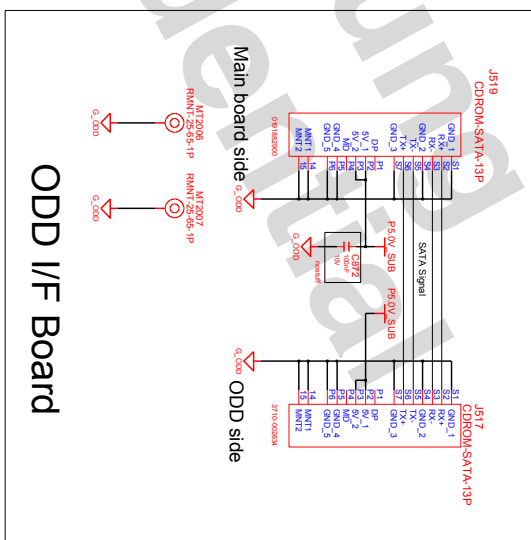
[illegible]

- 이 문서는 삼성전자의 기술 자산으로 승인자만이 사용할 수 있습니다 -
- This Document can not be used without Samsung's authorization -

8. Block Diagram and Schematic



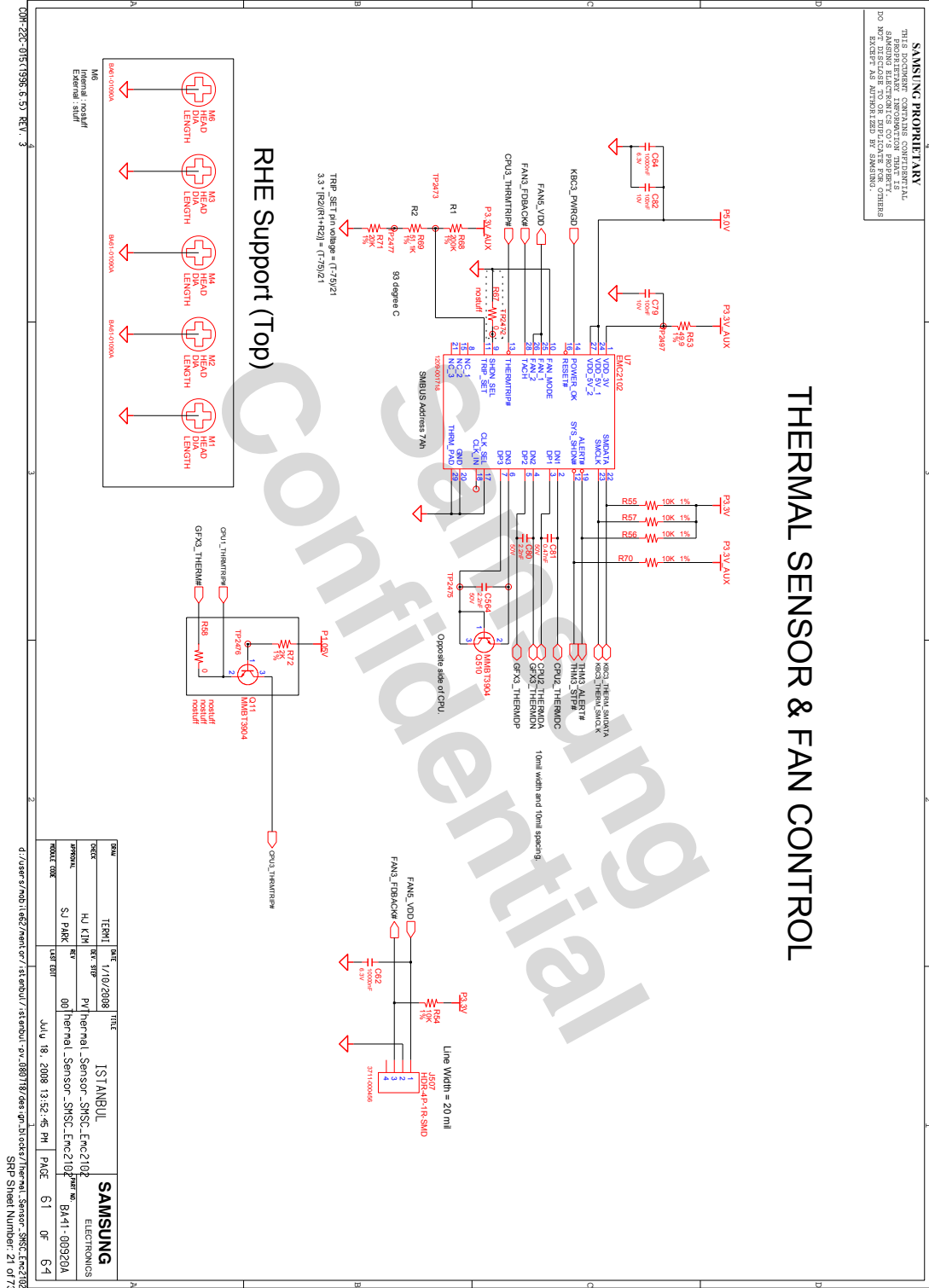
SAMSUNG PROPRIETARY
THIS DOCUMENT CONTAINS CONFIDENTIAL
PROPRIETARY INFORMATION THAT IS
SAMSUNG ELECTRONICS CO.'S PROPERTY.
DO NOT DISCLOSE TO OR DUPLICATE FOR OTHERS
EXCEPT AS AUTHORIZED BY SAMSUNG.



DESIGN	TITLE		SAMSUNG ELECTRONICS
ORDER	TERM	ISTANBUL	
	DEL. S/D	SUB BOARD	
APPROVAL	PL. K/IN	US\$. 000	
	SJ. PARK	REV. 00	
MODEL CODE	USE DIFF	PART NO.	
		B4-1-00320A	
JULY 18, 2008 3:52:45 PM		PAGE 18	OF 19

- 이 문서는 삼성전자의 기술 자산으로 승인자만이 사용할 수 있습니다 -
- This Document can not be used without Samsung's authorization -

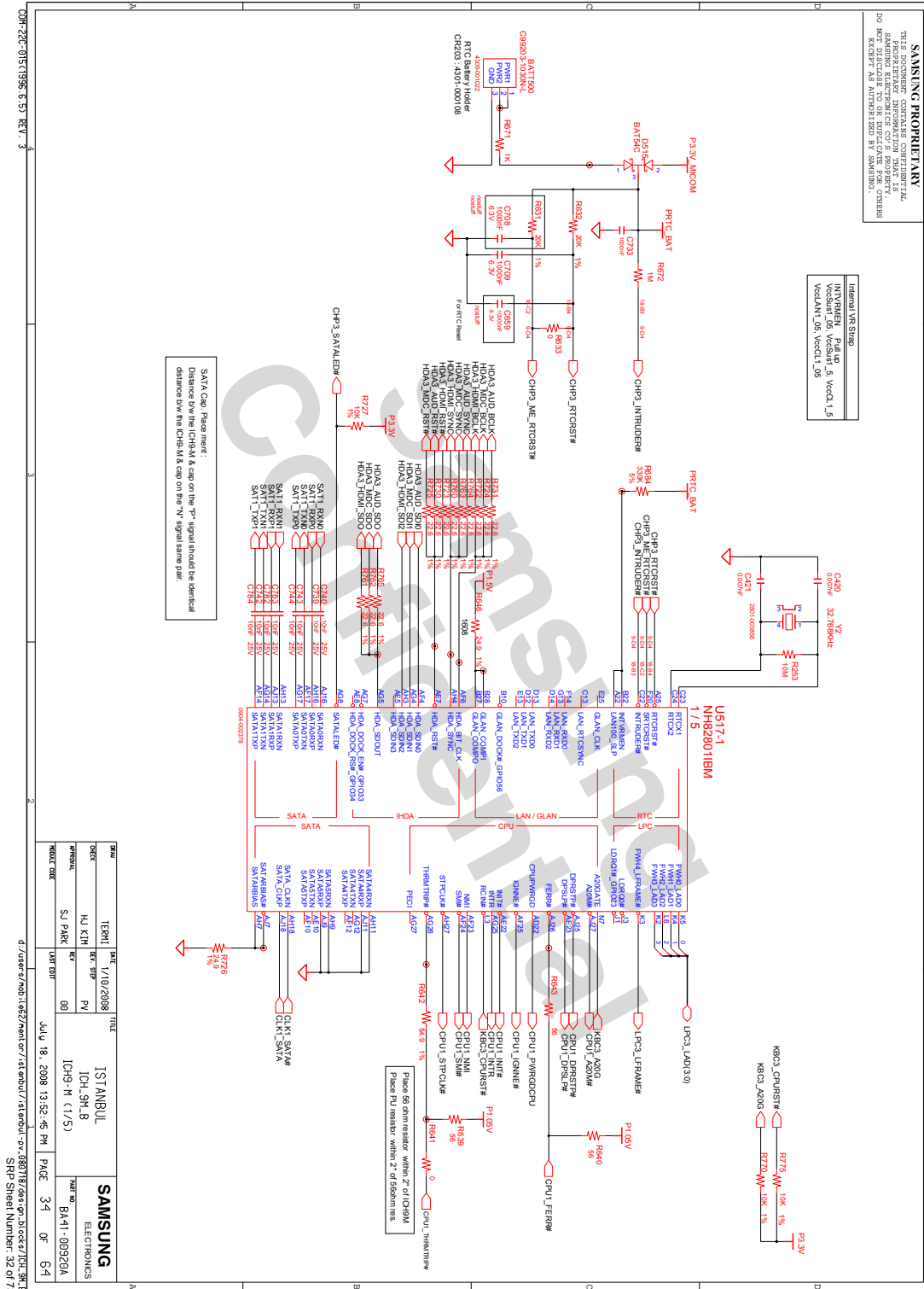
8. Block Diagram and Schematic



[illegible]

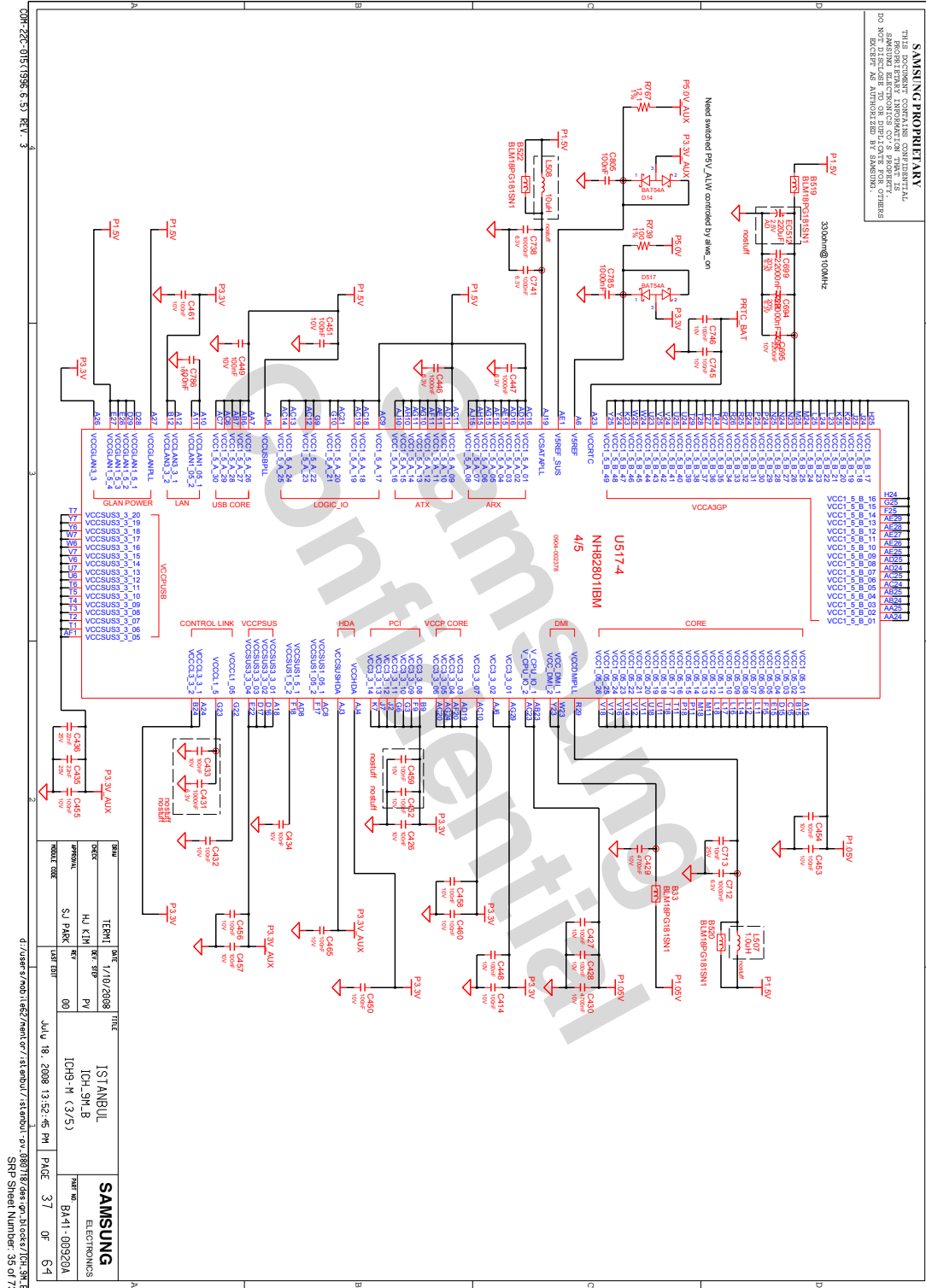
- 이 문서는 삼성전자의 기술 자산으로 승인자만이 사용할 수 있습니다 -
- This Document can not be used without Samsung's authorization -

8. Block Diagram and Schematic



- 이 문서는 삼성전자의 기술 자산으로 승인자만이 사용할 수 있습니다 -
- This Document can not be used without Samsung's authorization -

8. Block Diagram and Schematic



SAMSUNG PROPRIETARY
THIS DOCUMENT CONTAINS CONFIDENTIAL
PROPRIETARY INFORMATION THAT IS
SAMSUNG ELECTRONICS CO.'S PROPERTY.
DO NOT DISCLOSE TO OR DUPLICATE FOR OTHERS
EXCEPT AS AUTHORIZED BY SAMSUNG.

Copyright © 2008 Samsung Electronics Co., Ltd. All rights reserved. This document contains confidential information and is intended only for the individual named. If you are not the named individual you should not disseminate, distribute or copy this e-mail. Please notify the sender immediately by e-mail if you have received this e-mail by mistake. Password protected e-mails transmitted over insecure communication methods should not be opened. Samsung Electronics Co., Ltd. reserves the right to alter products offerings and specifications at any time without notice, and is not responsible for typographical or graphical errors that appear in this document.
 0001-20151 (Rev. 6.5) REV. 3

[illegible]

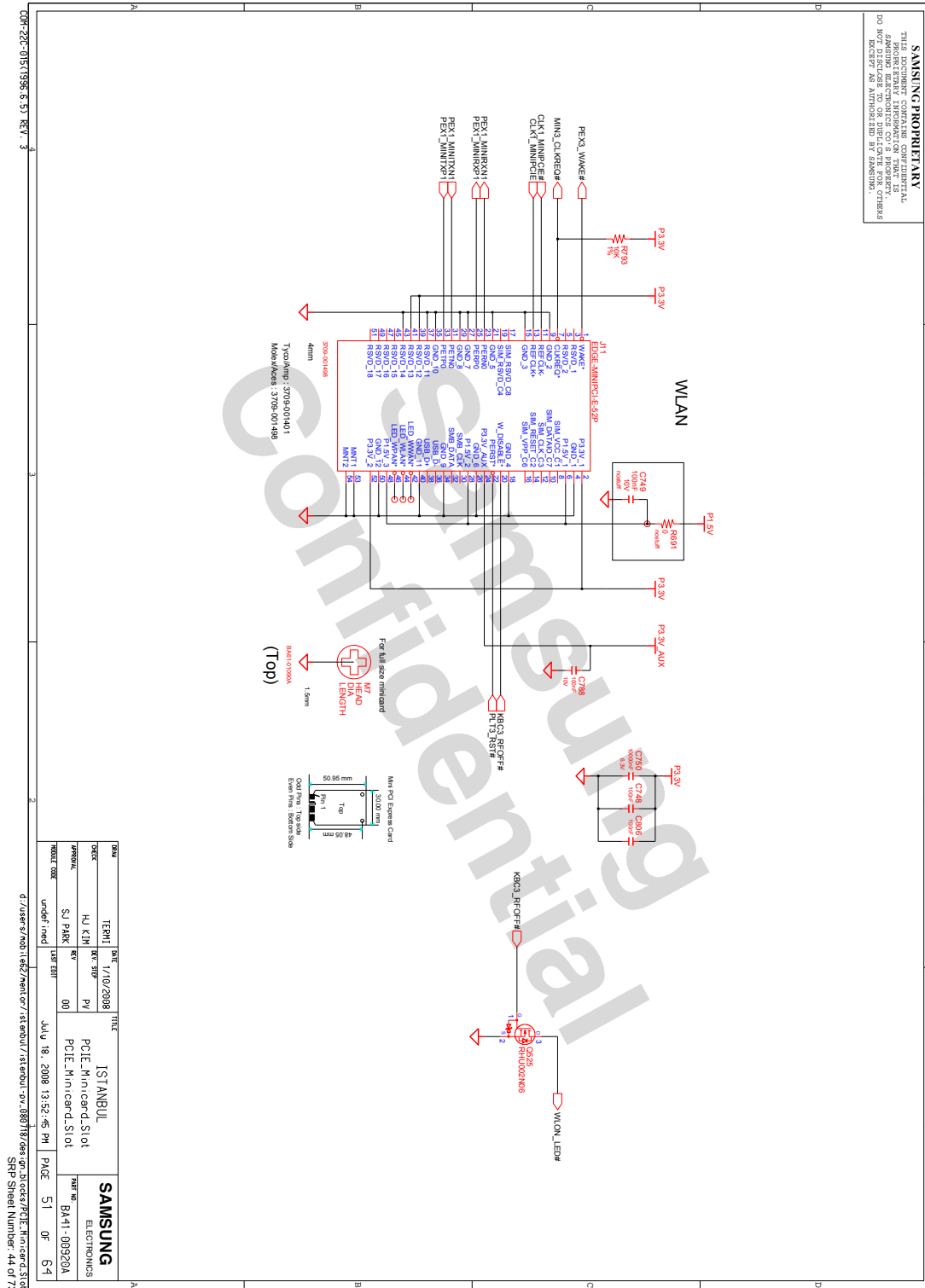
SAMSUNG PROPRIETARY
THIS DOCUMENT CONTAINS CONFIDENTIAL
PROPRIETARY INFORMATION THAT IS
SAMSUNG ELECTRONICS CO.'S PROPERTY.
DO NOT DISCLOSE TO OR DUPLICATE FOR OTHERS
EXCEPT AS AUTHORIZED BY SAMSUNG.

DATE	DATE	TITLE	SAMSUNG	
8/2/2008	11:31	ISTABL	ELECTRONIC	
DEPT	REF	REF		
HM KIM	PL	Graphics_Memory(GDDR2)		
APPROVAL	REV	Graphics_Memory divide 1/2	B411-001920-00	
SJ PARK	00			
MODIFIED	DATE			
	July 18, 2008 13:52:45 PM		PAGE	2 OF 2

d:/users/nobile2/ent/or/istanbul/istanbul-pv_08018/design_blocks/Graphics_Memory.Nvidia

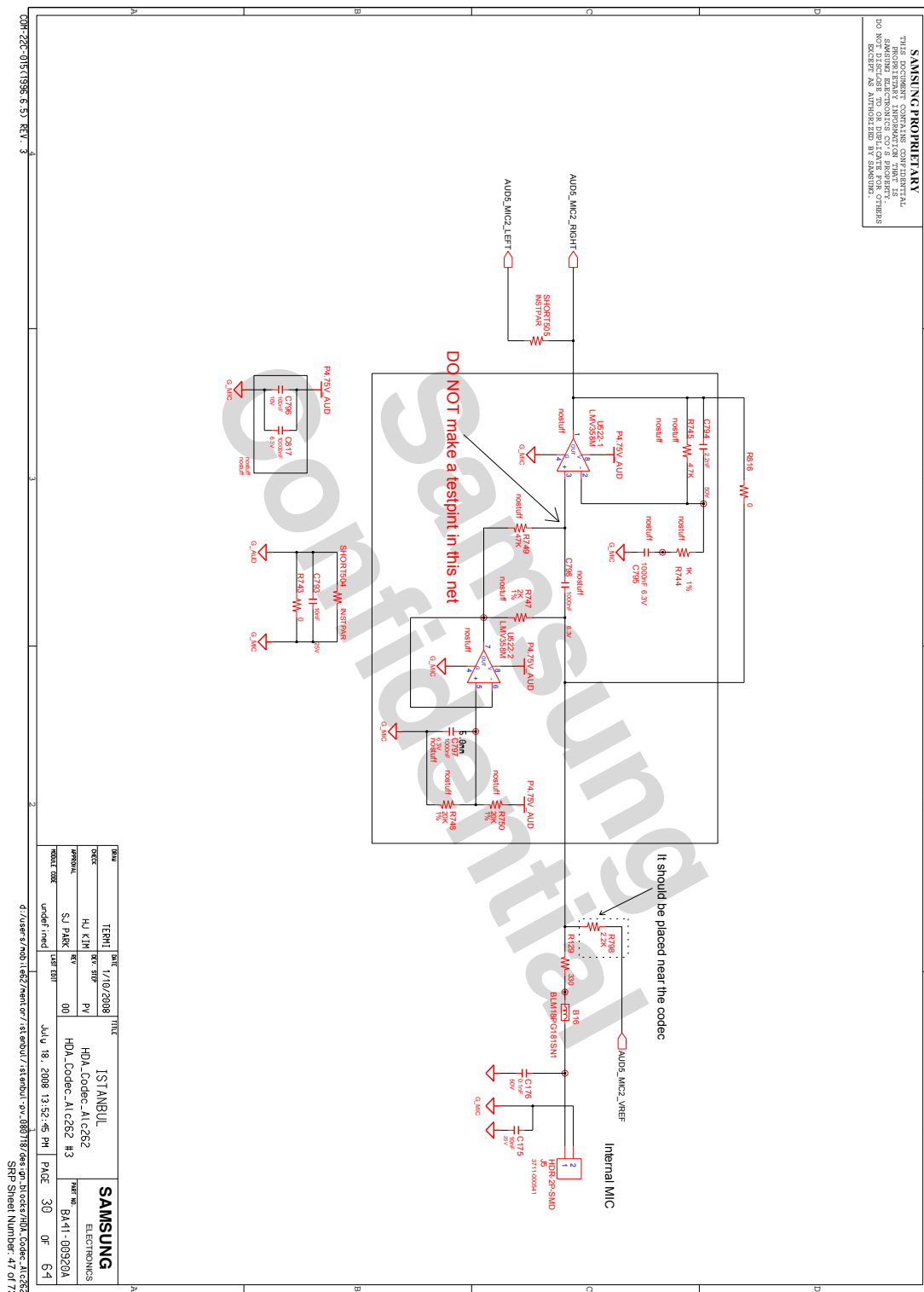
- 이 문서는 삼성전자의 기술 자산으로 승인자만이 사용할 수 있습니다 -
- This Document can not be used without Samsung's authorization -

8. Block Diagram and Schematic



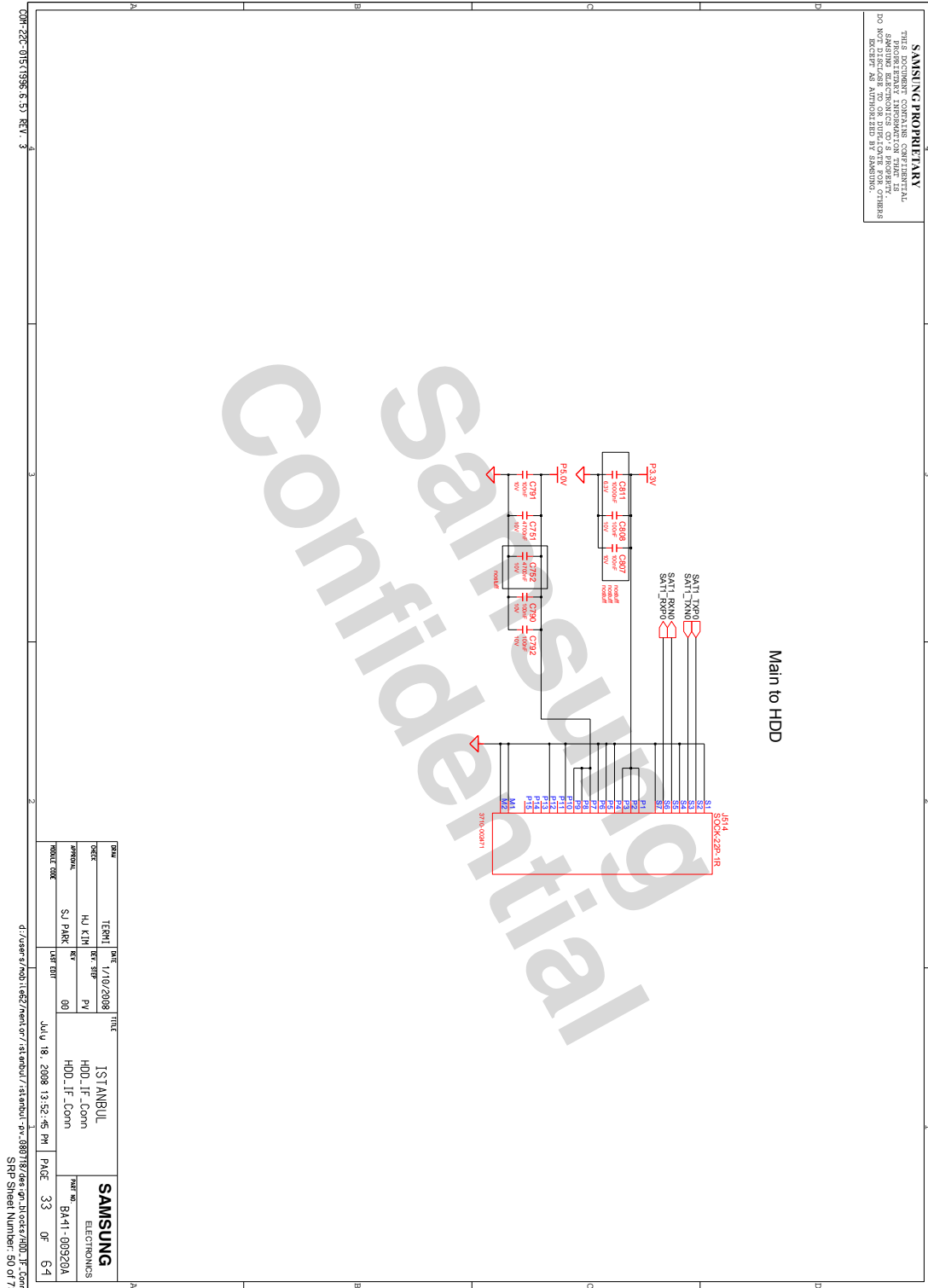
- 이 문서는 삼성전자의 기술 자산으로 승인자만이 사용할 수 있습니다 -
- This Document can not be used without Samsung's authorization -

8. Block Diagram and Schematic

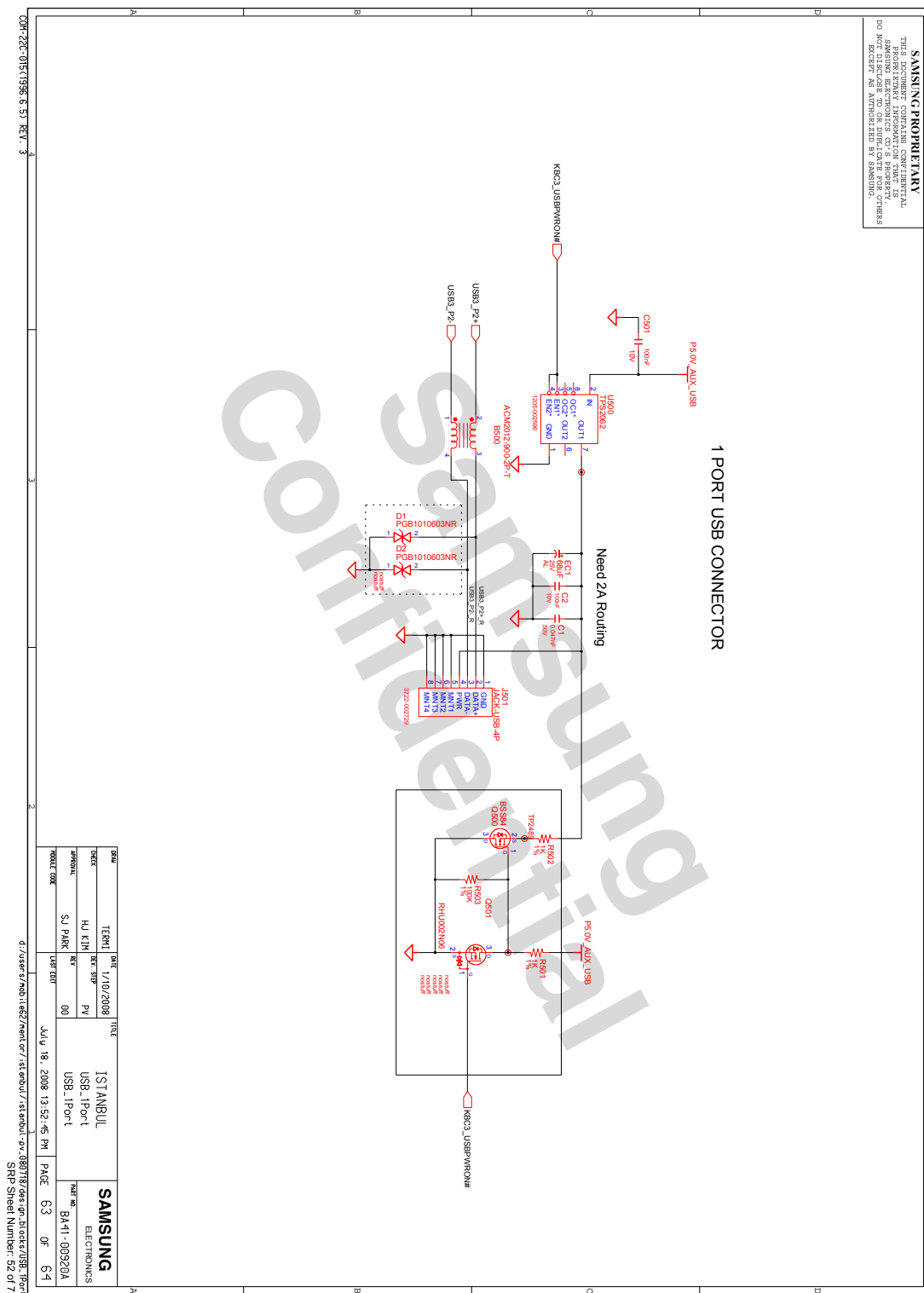


- 이 문서는 삼성전자의 기술 자산으로 승인자만이 사용할 수 있습니다 -
- This Document can not be used without Samsung's authorization -

8. Block Diagram and Schematic



SAMSUNG PROPRIETARY
THIS DOCUMENT CONTAINS CONFIDENTIAL
PROPERTY INFORMATION THAT IS
SAMSUNG ELECTRONICS CO.'S PROPERTY.
DO NOT DISCLOSE TO OR DUPLICATE FOR OTHERS
EXCEPT AS AUTHORIZED BY SAMSUNG.



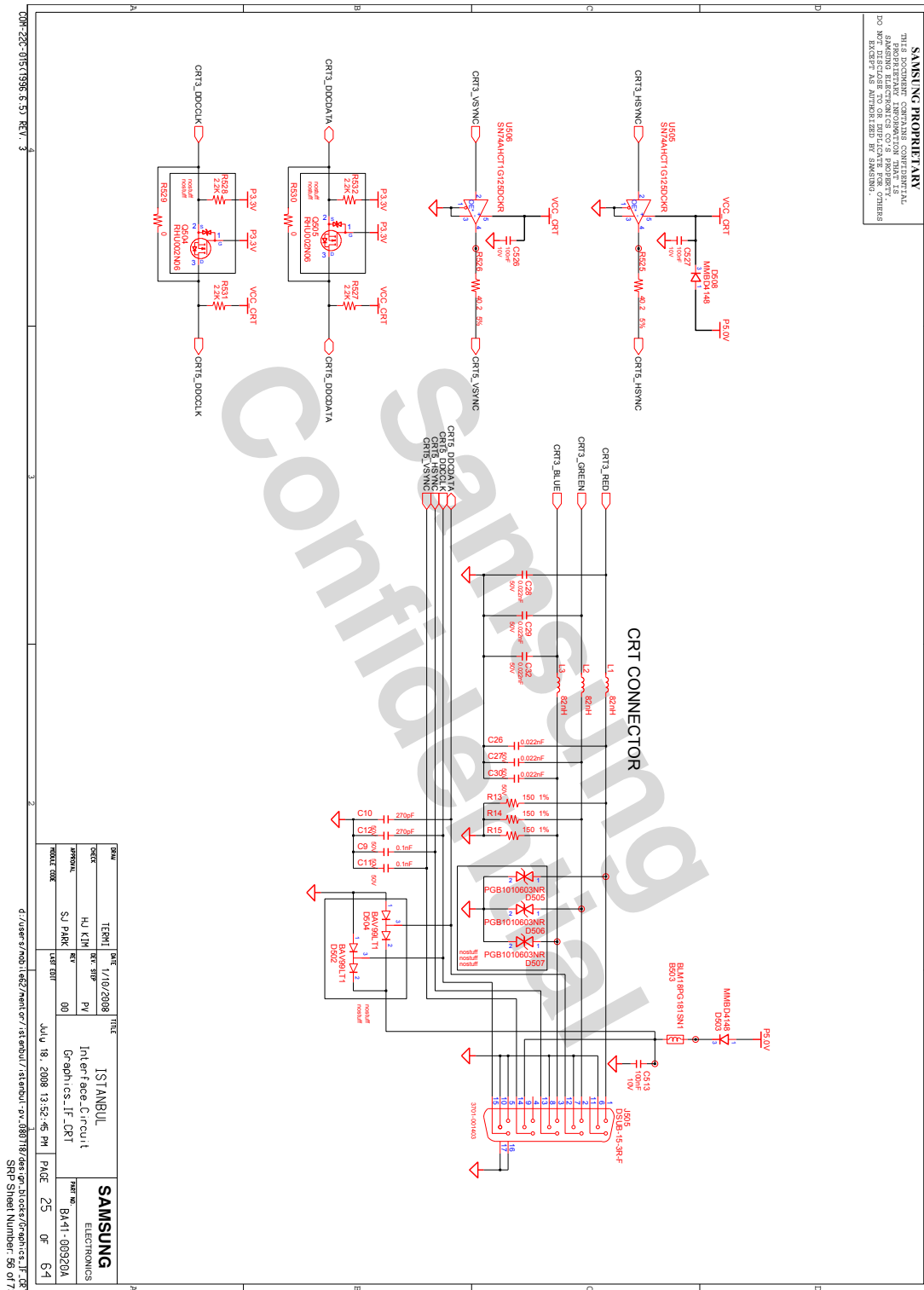
SAMSUNG PROPRIETARY

THIS DOCUMENT CONTAINS CONFIDENTIAL
PROPRIETARY INFORMATION THAT IS
SAMSUNG ELECTRONICS CO.'S PROPERTY.
DO NOT DISCLOSE TO OR DUPLICATE FOR OTHERS
EXCEPT AS AUTHORIZED BY SAMSUNG.



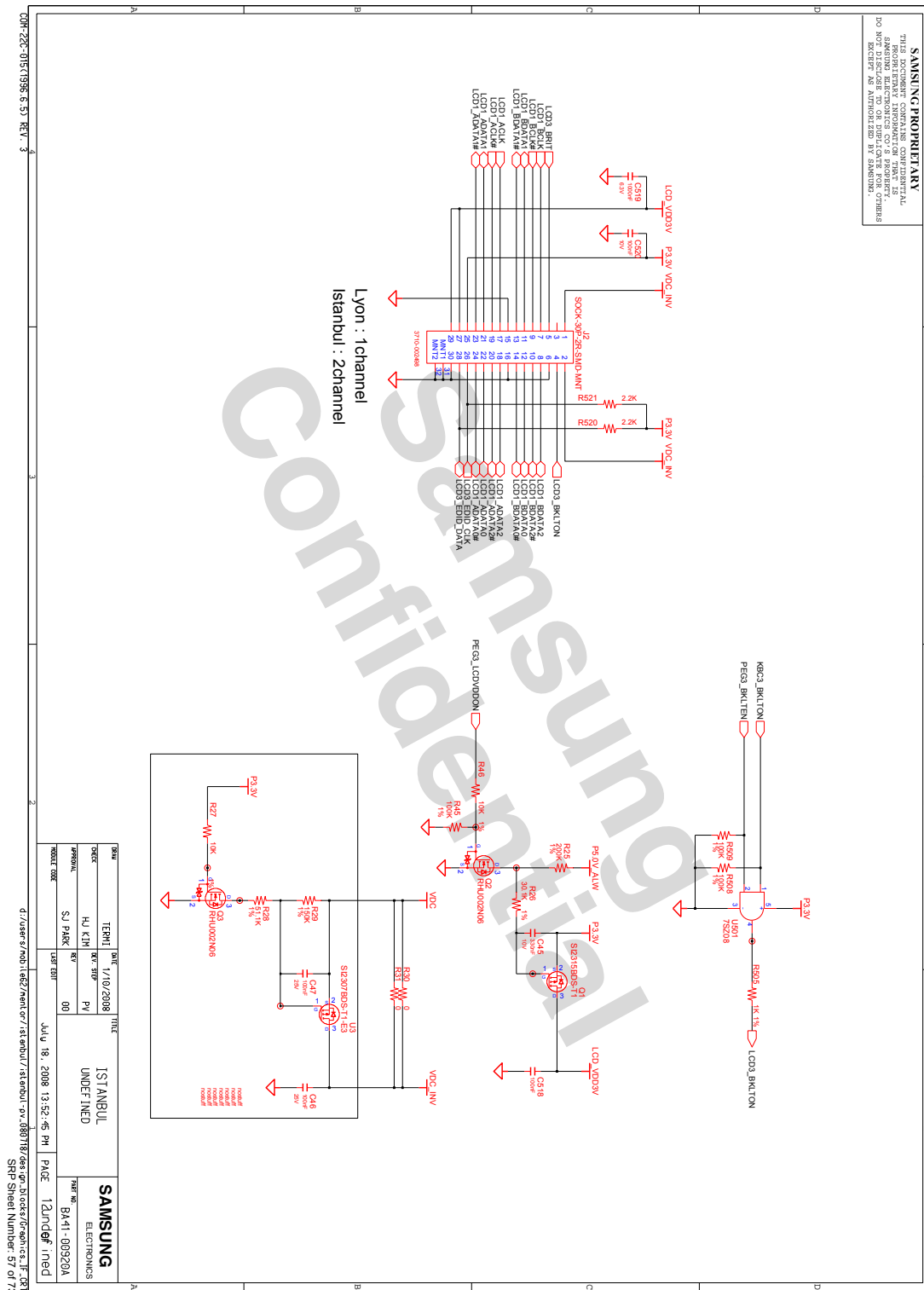
- 이 문서는 삼성전자의 기술 자산으로 승인자만이 사용할 수 있습니다 -
- This Document can not be used without Samsung's authorization -

8. Block Diagram and Schematic

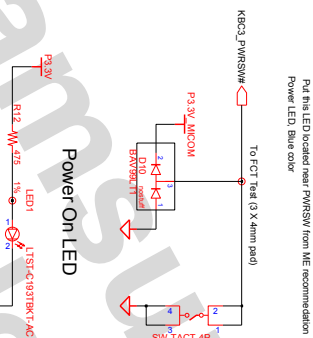


- 이 문서는 삼성전자의 기술 자산으로 승인자만이 사용할 수 있습니다 -
- This Document can not be used without Samsung's authorization -

8. Block Diagram and Schematic



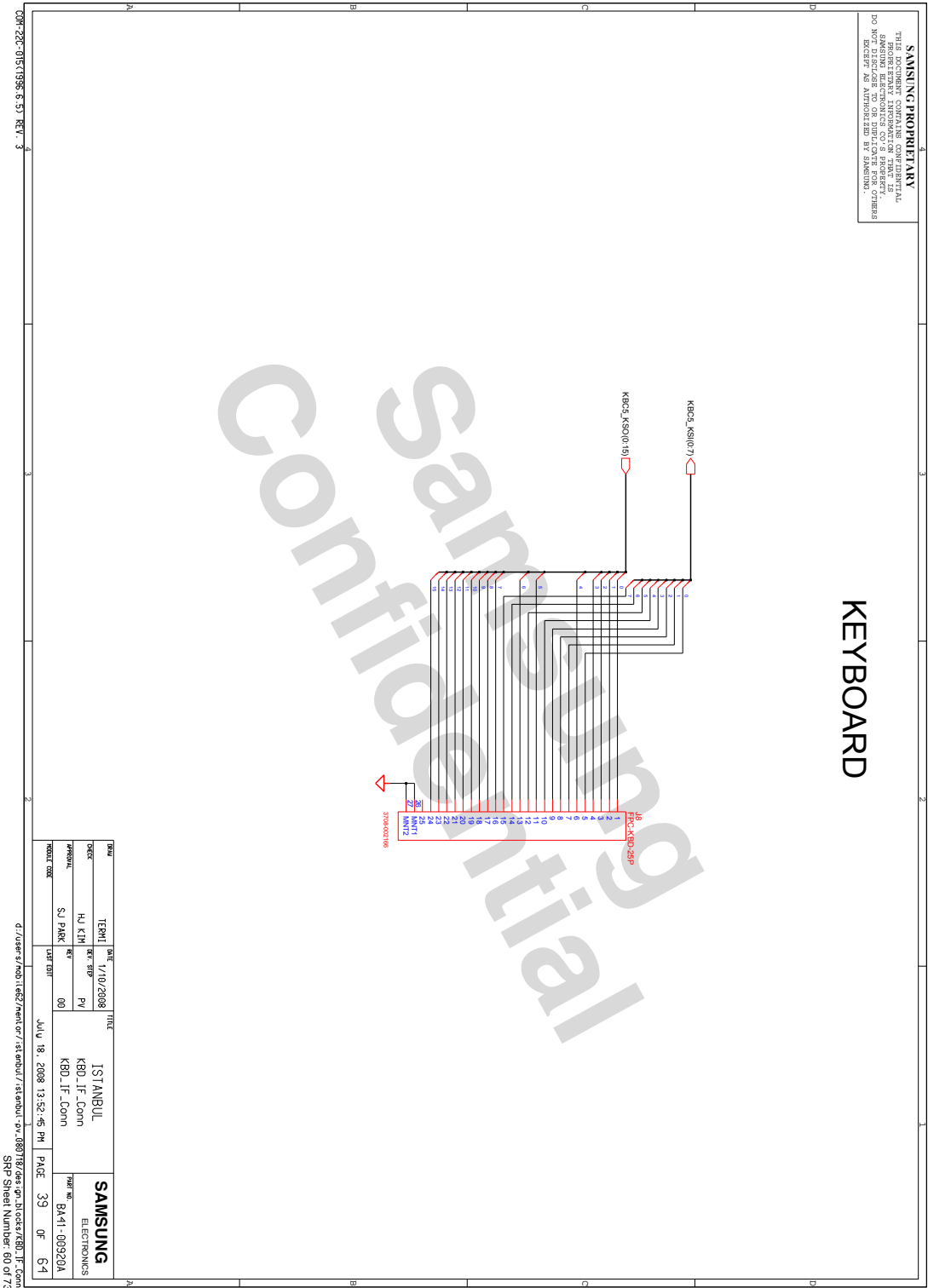
SAMSUNG PROPRIETARY
THIS DOCUMENT CONTAINS CONFIDENTIAL
PROPRIETARY INFORMATION THAT IS
SAMSUNG ELECTRONICS CO.'S PROPERTY.
DO NOT DISCLOSE TO OR DUPLICATE FOR OTHERS
EXCEPT AS AUTHORIZED BY SAMSUNG.



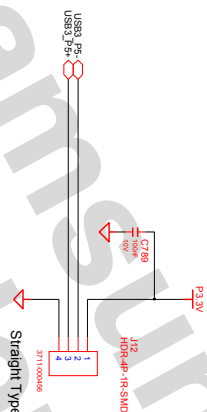
SW	DATE	TITLE	SAMSUNG ELECTRONICS
ORDER	TERMI	1/10/2008	
QUANTITY	QTY	10	
UNIT PRICE	UNIT	100	
TOTAL	TOTAL	1000	

- 이 문서는 삼성전자의 기술 자산으로 승인자만이 사용할 수 있습니다 -
- This Document can not be used without Samsung's authorization -

8. Block Diagram and Schematic



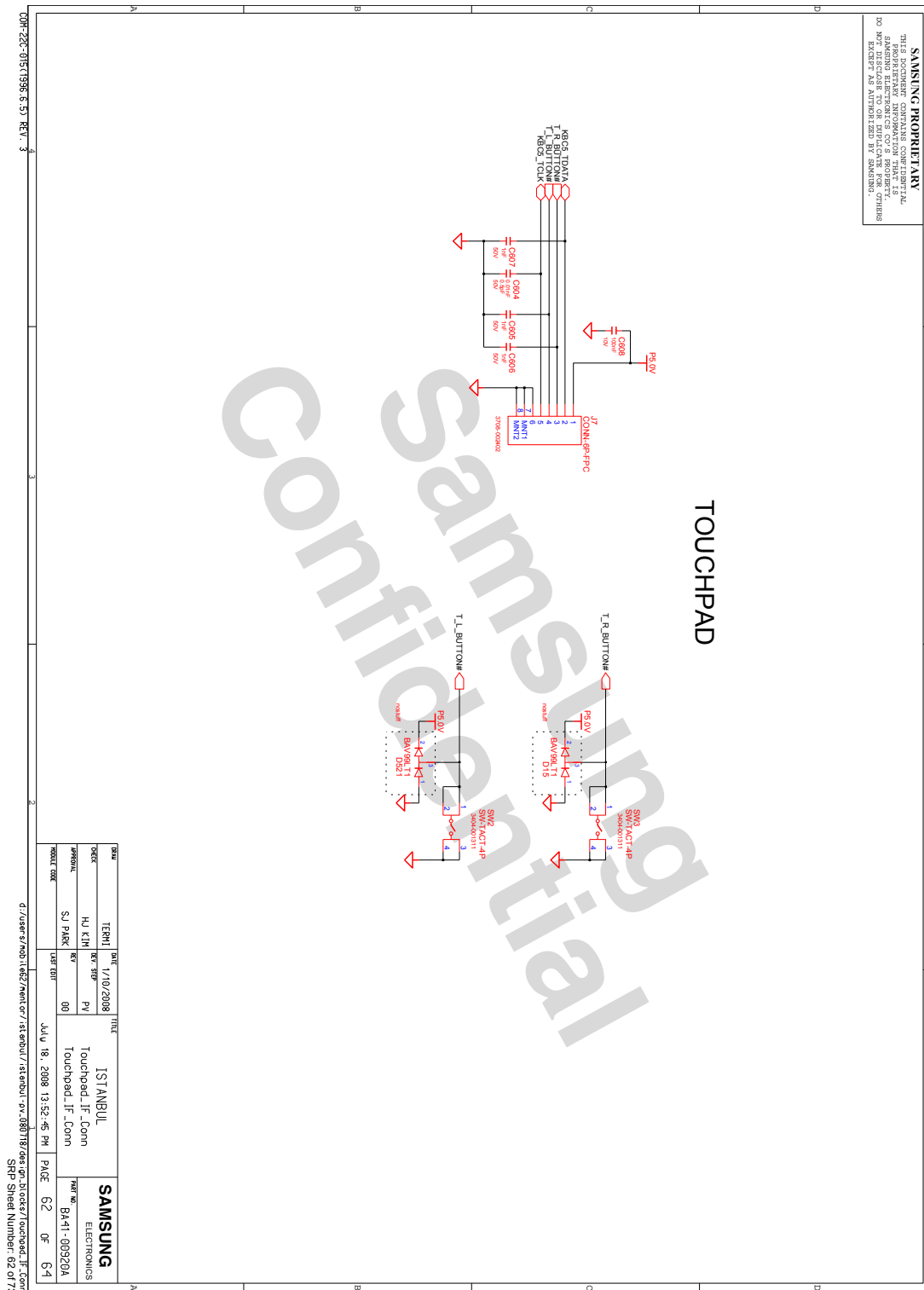
Bluetooth Interface



DATE	TITLE		SAMSUNG	
DATE	1/10/2008		ELECTRONICS	
DES. STEP	PV		PART NO.	
REV	00		BA-11-00920A	
DATE	JUL 18, 2008 13:52:45 PM		PAGE	19 OF 64

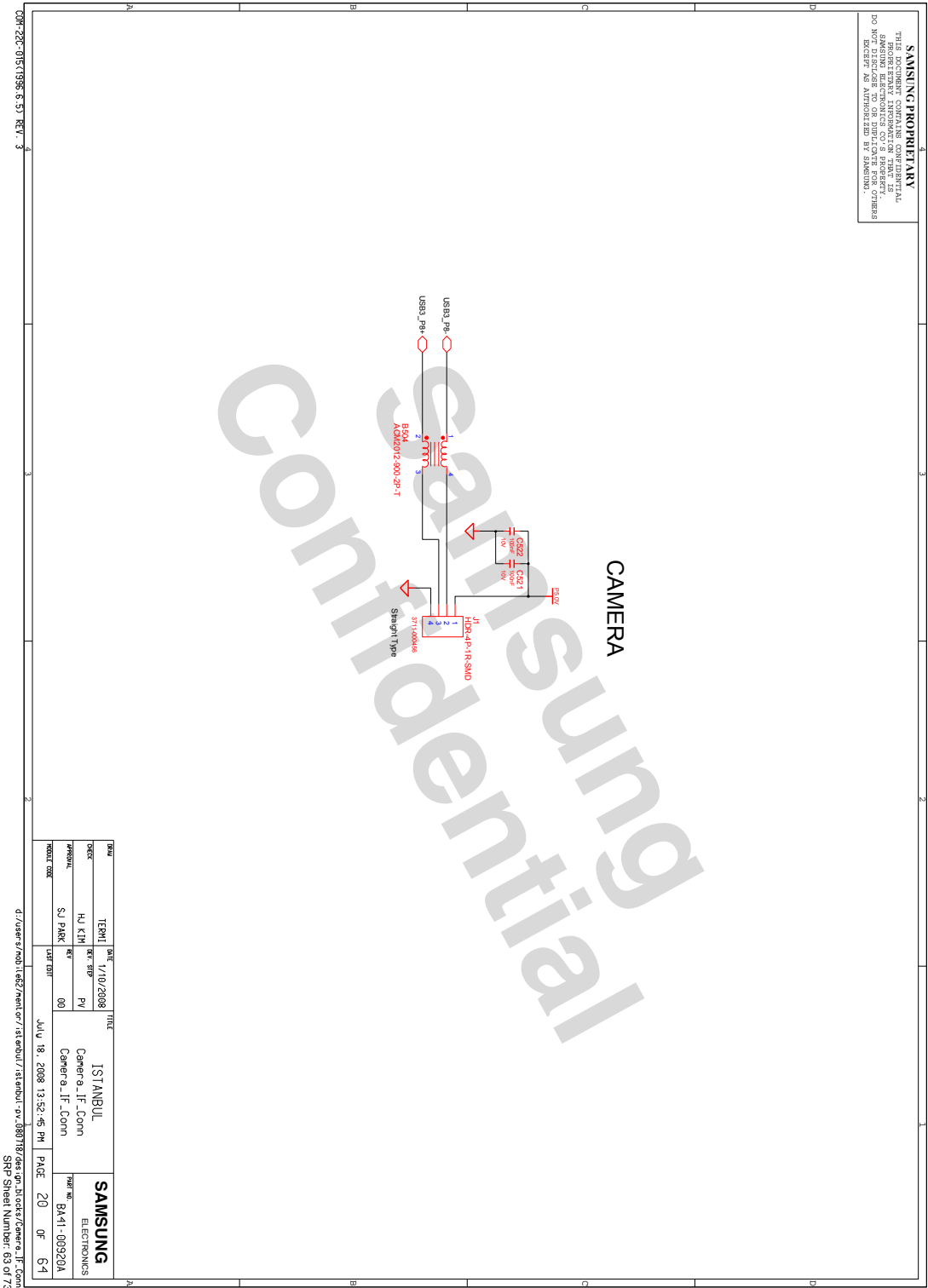
- 이 문서는 삼성전자의 기술 자산으로 승인자만이 사용할 수 있습니다 -
- This Document can not be used without Samsung's authorization -

8. Block Diagram and Schematic

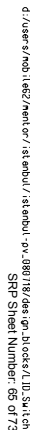


- 이 문서는 삼성전자의 기술 자산으로 승인자만이 사용할 수 있습니다 -
- This Document can not be used without Samsung's authorization -

8. Block Diagram and Schematic

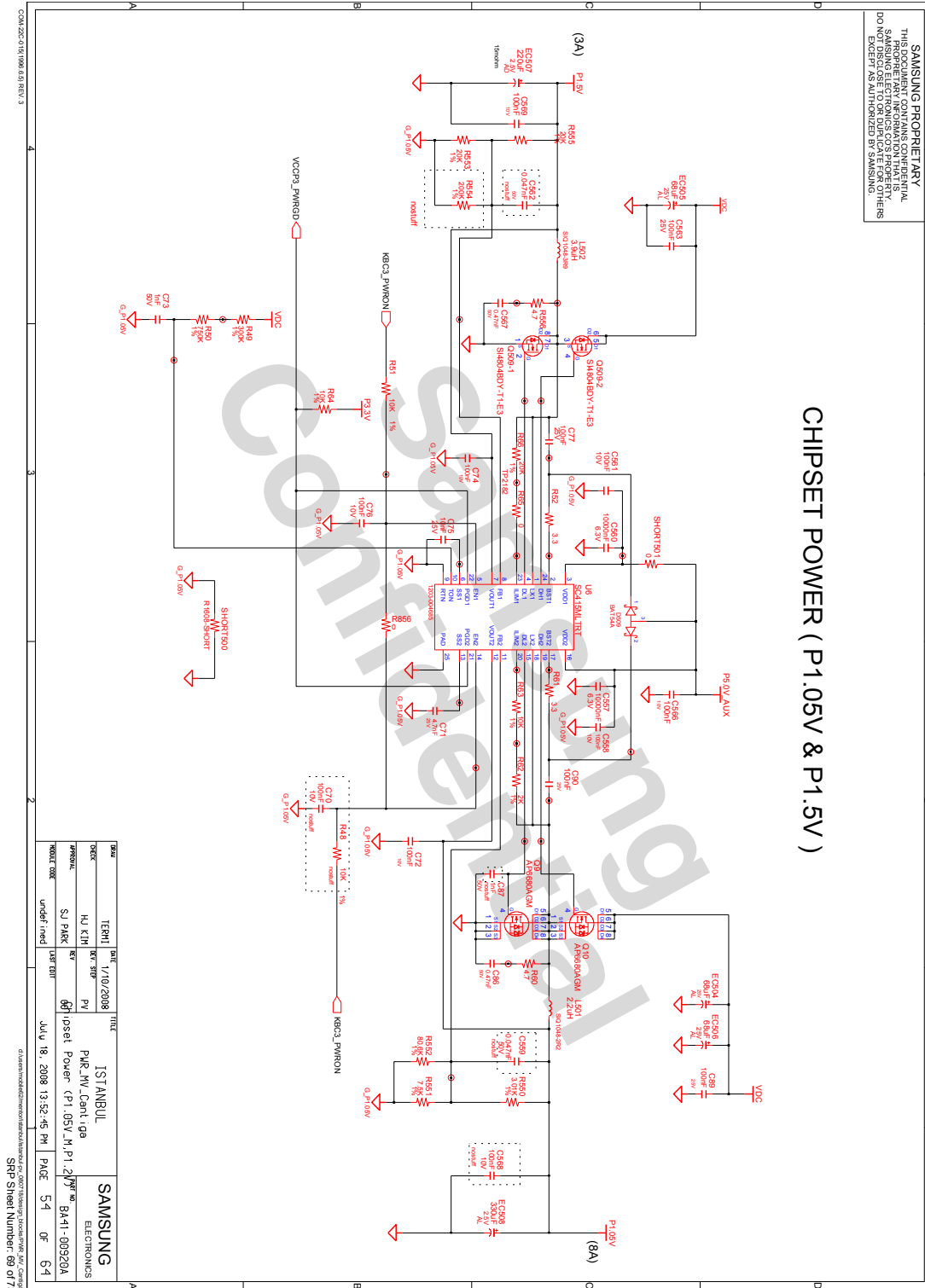


SAMSUNG PROPRIETARY
THIS DOCUMENT CONTAINS CONFIDENTIAL
PROPRIETARY INFORMATION THAT IS
SAMSUNG ELECTRONICS CO.'S PROPERTY.
DO NOT DISCLOSE TO OR DUPLICATE FOR OTHERS
EXCEPT AS AUTHORIZED BY SAMSUNG.



- 이 문서는 삼성전자의 기술 자산으로 승인자만이 사용할 수 있습니다 -
- This Document can not be used without Samsung's authorization -

8. Block Diagram and Schematic



[illegible]

- 이 문서는 삼성전자의 기술 자산으로 승인자만이 사용할 수 있습니다 -
 - This Document can not be used without Samsung's authorization -

8. Block Diagram and Schematic

1

Index Page

07/18/108
18:39:04

Sheet1	Root[sheet1]	Sheet51	ODD_IF_Conn[sheet1]
Sheet2	Root[sheet2]	Sheet52	USB_1Port[sheet1]
Sheet3	Root[sheet3]	Sheet53	USB_2Port[sheet1]
Sheet4	Root[sheet4]	Sheet54	HDA_Modem[sheet1]
Sheet5	Root[sheet5]	Sheet55	Other_Debug_80[sheet1]
Sheet6	Root[sheet6]	Sheet56	Graphics_IF_CRT[sheet1]
Sheet7	Root[sheet7]	Sheet57	Graphics_IF_CRT[sheet2]
Sheet8	Root[sheet8]	Sheet58	Graphics_IF_CRT[sheet3]
Sheet9	Root[sheet9]	Sheet59	MIO_Switch[sheet1]
Sheet10	Root[sheet10]	Sheet60	KBD_IF_Conn[sheet1]
Sheet11	Root[sheet11]	Sheet61	Bluetooth_IF_Conn[sheet1]
Sheet12	Root[sheet12]	Sheet62	Touchpad_IF_Conn[sheet1]
Sheet13	Root[sheet13]	Sheet63	Camera_IF_Conn[sheet1]
Sheet14	Root[sheet14]	Sheet64	LED_Switch[sheet1]
Sheet15	Root[sheet15]	Sheet65	LID_Switch[sheet1]
Sheet16	Root[sheet16]	Sheet66	PWR_CPU_MV_ISL6262[sheet1]
Sheet17	Root[sheet17]	Sheet67	PWR_Gfx_MV_Ext[sheet1]
Sheet18	Root[sheet18]	Sheet68	PWR_MV_3V_5V[sheet1]
Sheet19	Root[sheet19]	Sheet69	PWR_MV_Cantiga[sheet1]
Sheet20	CK_Clock_505M[sheet1]	Sheet70	PWR_MV_Charger_ISL6256[sheet1]
Sheet21	Thermal_Sensor_SMSC_Emc2102[sheet1]	Sheet71	PWR_MV_DisCharger[sheet1]
Sheet22	CPU_Penryn_MV_SV[sheet1]	Sheet72	PWR_MV_MemMory[sheet1]
Sheet23	CPU_Penryn_MV_SV[sheet2]	Sheet73	PWR_Gfx_MV_Ext[sheet2]
Sheet24	CPU_Penryn_MV_SV[sheet3]		
Sheet25	MCH_CANTIGA_GM_DDR2[sheet1]		
Sheet26	MCH_CANTIGA_GM_DDR2[sheet2]		
Sheet27	MCH_CANTIGA_GM_DDR2[sheet3]		
Sheet28	MCH_CANTIGA_GM_DDR2[sheet4]		
Sheet29	MCH_CANTIGA_GM_DDR2[sheet5]		
Sheet30	SODIMM_DDR2[sheet1]		
Sheet31	SODIMM_DDR2[sheet2]		
Sheet32	ICH_9M_B[sheet1]		
Sheet33	ICH_9M_B[sheet2]		
Sheet34	ICH_9M_B[sheet3]		
Sheet35	ICH_9M_B[sheet4]		
Sheet36	ICH_9M_B[sheet5]		
Sheet37	SPI_BIOS_ROM[sheet1]		
Sheet38	Gfx_External_Nvidia_Nb9x_64bit[sheet1]		
Sheet39	Gfx_External_Nvidia_Nb9x_64bit[sheet2]		
Sheet40	Gfx_External_Nvidia_Nb9x_64bit[sheet3]		
Sheet41	Gfx_External_Nvidia_Nb9x_64bit[sheet4]		
Sheet42	Graphics_Memory_Nvidia[sheet1]		
Sheet43	Graphics_Memory_Nvidia[sheet2]		
Sheet44	PCIE_Minicard_Slot[sheet1]		
Sheet45	HDA_Codec_Alc262[sheet1]		
Sheet46	HDA_Codec_Alc262[sheet2]		
Sheet47	HDA_Codec_Alc262[sheet3]		
Sheet48	HDA_Codec_Alc262[sheet4]		
Sheet49	MICOM_Renasas2110_100p[sheet1]		
Sheet50	HDD_IF_Conn[sheet1]		